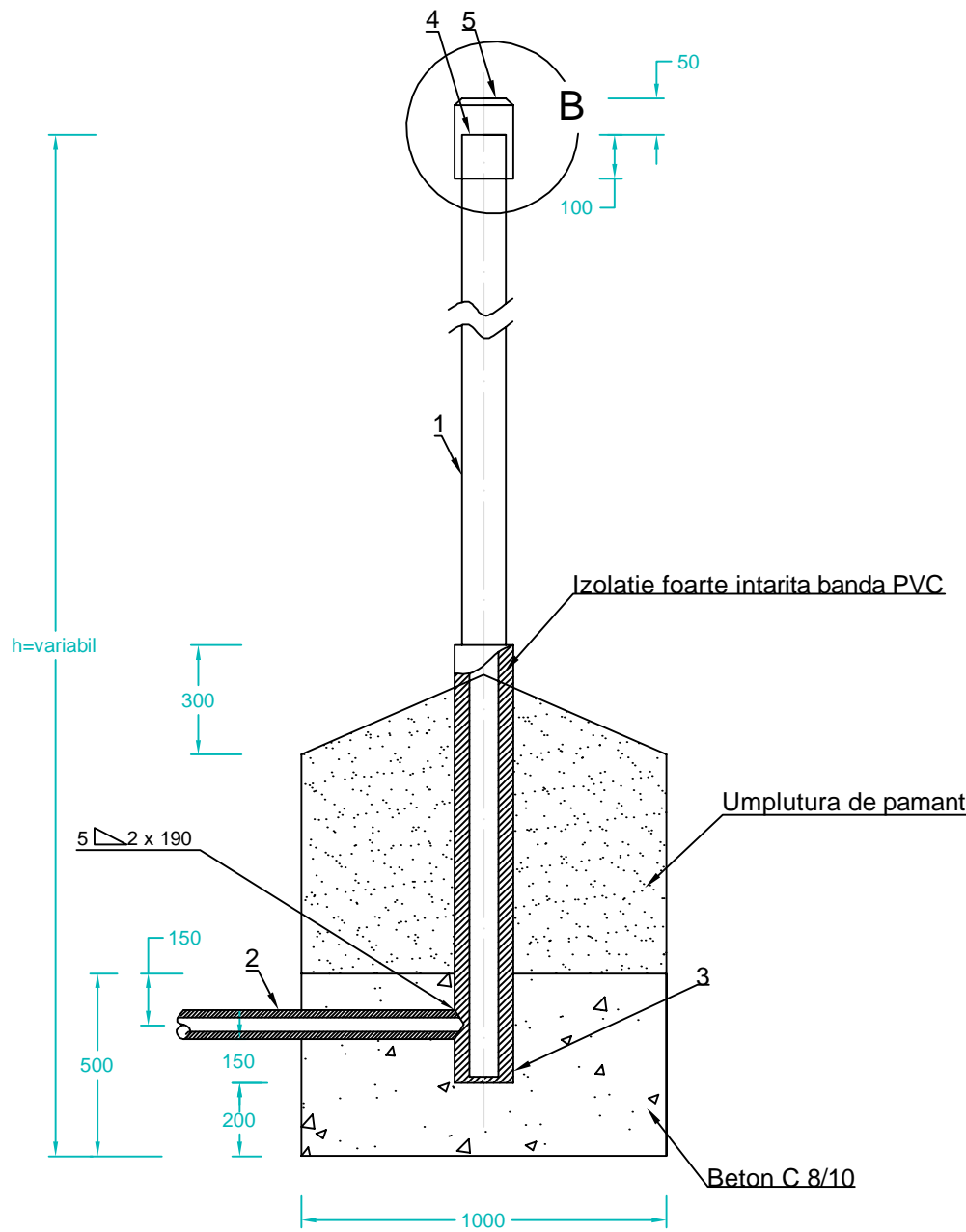
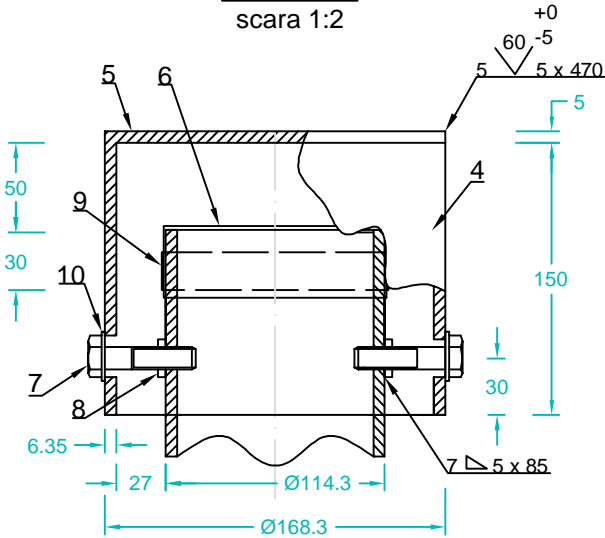


DETALIU DISPOZITIV DE AERISIRE

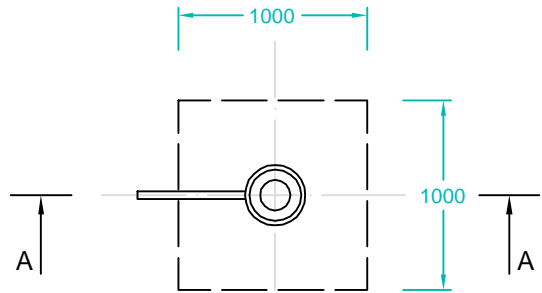
Sectione A - A  
scara 1:20



Detaliul B  
scara 1:2



Vedere in plan  
scara 1:2



h (m)	3.90m	4.40m	4.90m	5.40m	5.90m	Volum beto
Greutate (Kg)	74.90	83.20	91.50	99.80	108.10	0.50m³ / bu

Poz.	DENUMIRE	STAS	BUC.	MATERIAL	OBSERVATII
1	TEAVA AERISIRE	SR EN ISO 3183/2013	1	L 245N	Ø114.3 x 4 x h
2	RACORD	SR EN ISO 3183/2013	1	OLT 35 STAS 8185-88	Ø60.3 x 3.6mm
3	FUND DREPT		1	OL 37.2 K STAS 8183:80	5 x 120 x 120 mm SR EN 10029:2011
4	CAPAC	SR EN ISO 3183/2013	1	L 245N	Ø168.3 x 6.35 x 150
5	FUND DREPT		1	OL 37.2 K STAS 8183:80	5 x 170 x 170 SR EN 10029:2011
6	SITA "DAVIS"	SR ISO 3310-1:2000	1		140 ochiuri /cm²
7	SURUB M16 x 46	SR EN ISO 4016:2011	2	OLC 35 SR EN 10083-2:2007	
8	PIULITA B M16	SR EN ISO 4034:2013	2	OLC 25 SR EN 10083-2:2007	
9	COLIER FALTUIT		1		Ø30 x 1.0 x 350mm
10	SAIBA GROWER N16	SR 7666-2:1994	2	OLC 55A	

NOTA:

- Pentru fundatii se va folosi beton C 8/10
- Sapatura de pamant va fi bine compactata in sapaturi de 10-20 cm
- Sita "Davis" se compune din doua tesaturi suprapuse din sarma de 0.3.....0.4 mm grosime si 144 ochiuri/cm².
- Tesatura din sarma aleasa 0.5 corespunde conditiilor de mai sus avand sarma cu grosimea 0.34 mm cu 142 ochiuri/cm².
- Sudurile vor fi executate electric cu electrozi E35.2 B SR EN 499.

Verificator/ Expert	Nume	Semnatura	Cerinta	Referat / Expertiza Nr. / Data
S.C. SNIF PROIECT S.A. Targoviste Numar de inmatriculare J15/925/2005				Beneficiar: S.C. CONPET S.A. PLOIESTI
S.C. SNIF PROIECT S.A. Targoviste Numar de inmatriculare J15/925/2005				Pr. nr. 322/201
Specificatie	Nume	Semnatura	Scara: 1:20 1:2	"Inlocuire conducta de titei Ø14" Constanta - Baraganu, in zona Castelu - Cuza Voda - Mircea Voda, jud. Constanta, pe o lungime de cca. 12.580m"
Sef proiect	Ing. Costea Paul			
Desenat	Ing. Radu Florin		Data: 2016	Detaliu dispozitiv de aerisire
Proiectat	Ing. Costea Paul			
				Pl. nr. 27